

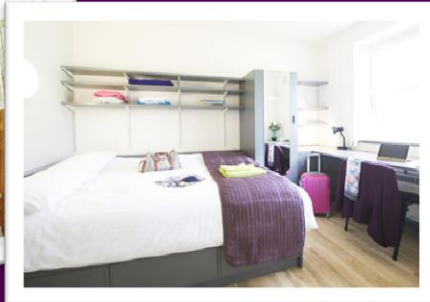


NUI Galway  
OÉ Gaillimh



# TAKING PART IN ÉTAPE CONNEMARA?

*Need somewhere to  
put your feet up?*



**ENJOY SPECIAL RATES AT  
CORRIB VILLAGE**  
*minutes from Croí House*

**VIEW MAP**

- Free Wi-Fi
- Free bus service to/from city centre
- Secure, shared bike storage

Accommodation Type	Shared Bathroom	Ensuite Bathroom
Single (room-only)	€30	€40
Double (room-only)	€45	€60
4-bed apartment*	€240	

*\*Minimum 2-night stay for self-catering apartments  
Breakfast can be added for extra €5 per person*

**CLICK HERE TO BOOK**

*enter promo code: **etape16***